

SHOWCASING POWNAL

with the Pownal Historical Society

Lilia Robinowitz and Olivia White
Environmental Planning Workshop
Williams College, Class of 2022



Land Acknowledgement

It is with gratitude and humility that we acknowledge that we are working and gathering on the ancestral homelands of the Mohican people, who are the indigenous peoples of this land.

Despite tremendous hardship in being forced from here, today their community resides in Wisconsin, and is known as the Stockbridge-Munsee Community.

As we live and learn on these territories, we must keep in mind community struggles for self-determination and the colonial legacies of scholarly practices, acknowledging the truth of violence perpetuated by settler colonialism.

We pay honor and respect Mohican elders past, present, and future as we commit to building a more inclusive and equitable space for all.

INTRODUCTIONS



Mission

Create a platform to showcase Pownal's rich history, beautiful landscape, and present day assets.



PROJECT GOALS



BIRDS EYE VIEW, FOWNAL CTR., VT. 47.



- 1. SHARE POWNAL'S RICH HISTORY AND LANDSCAPE**
- 2. ENCOURAGE ECONOMIC DEVELOPMENT**
- 3. BUILD COMMUNITY**

Deliverables



Pownal Historical Society website

Which includes separate *History* pages on Pownal's churches, cemeteries, schools, people, places, and maps. It also includes an *Explore* tab, with sections on recreation and businesses (past and present), as well as a tab for *Driving Tours*.



Driving tour template

"Churches" driving tour that takes visitors to each of the five churches in Pownal, including a graphic map and written instructions. This will serve as an example for future driving tours.



Interviews

To learn more about Pownal's history and residents, provide content for website pages, and provide content for a potential podcast published by the Pownal Historical Society podcasts.

PROJECT BACKGROUND



Carl Villanueva



About Vermont and Pownal





Natasha Baranow



Bill Botzow



Angie Rawling

Carl Villanueva



Vermont
small
rural (61%)
agricultural history

Source: Christopher Koliba et al., "Amplifying Vermont's Economic Resilience: A Community Economic Development Roundtables Report," UVM's Office of Engagement and Center for Rural Studies (August 2021): 10, https://www.uvm.edu/sites/default/files/Office-of-Engagement/Roundtable_Report_3.pdf.

Key Challenges

Carl Villanueva

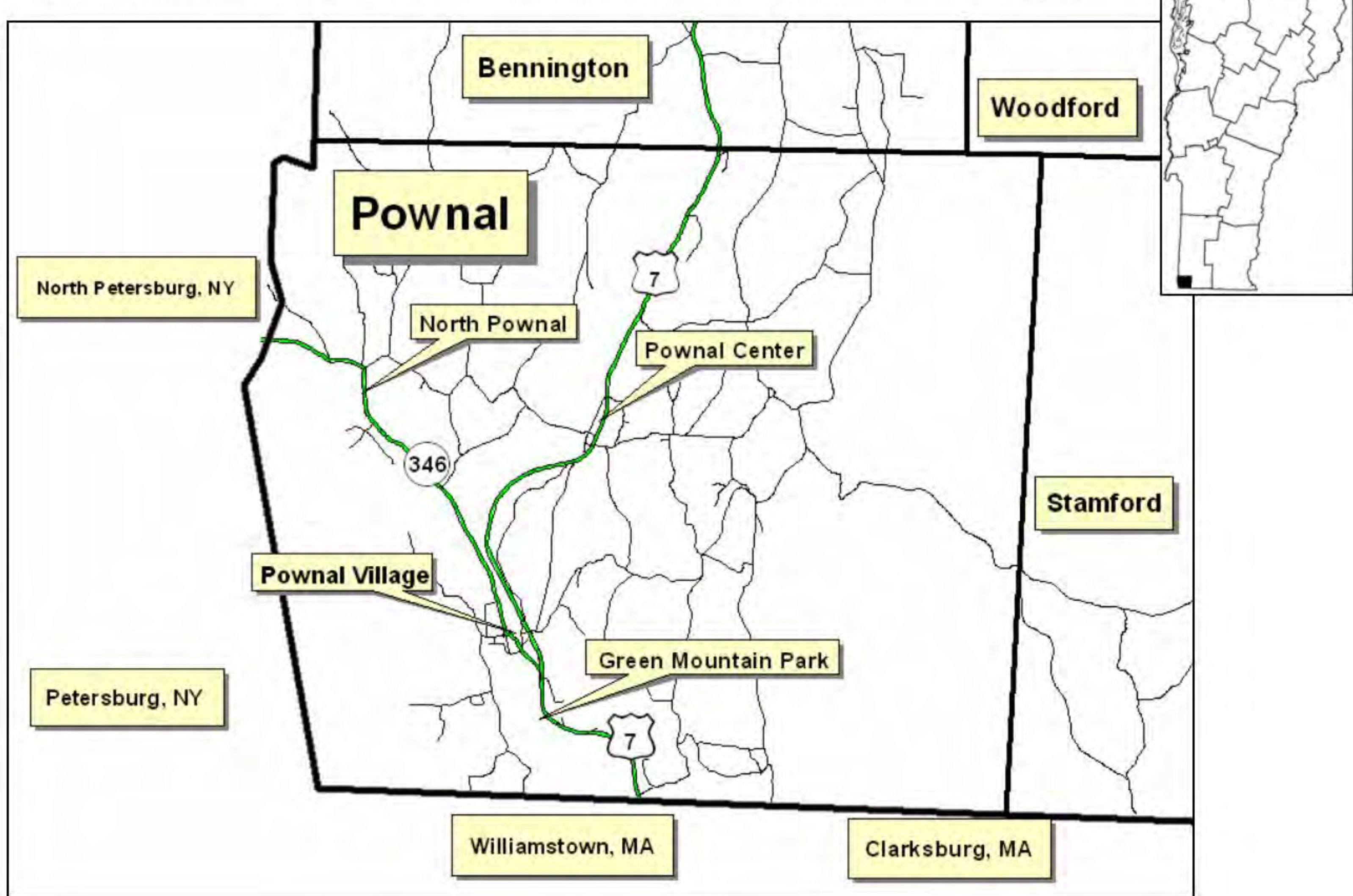
- **workforce** → unemployment rate: 3.0% (2021)
- equity
- affordability
- investment
- **education** → high school grad. rate (Pownal): 87%
college educated residents: 18%
- broadband
- digital economy
- **housing** → second-home ownership: 17% (2017)
- infrastructure
- environment
- demographics
- healthcare
- transportation
- coordination

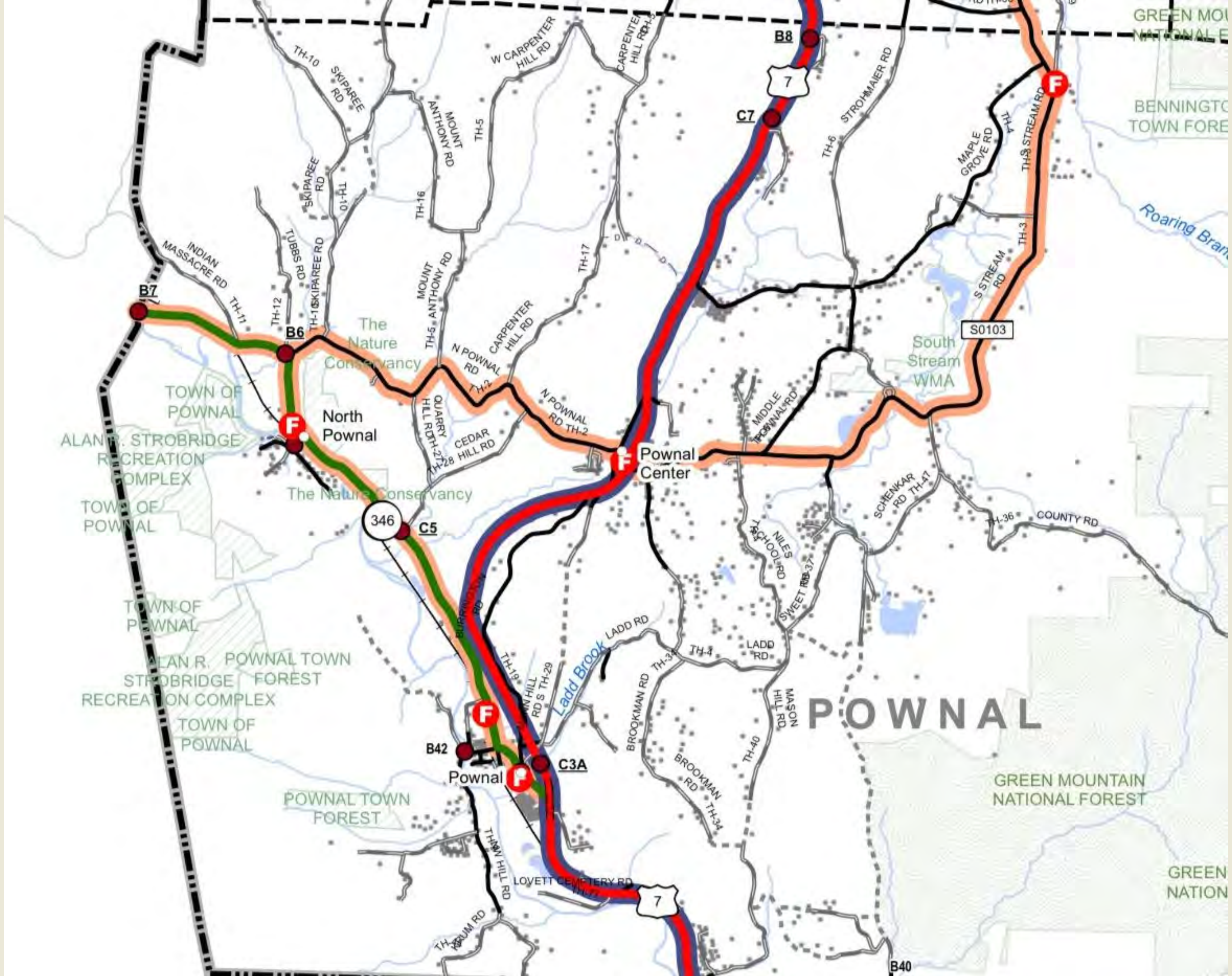


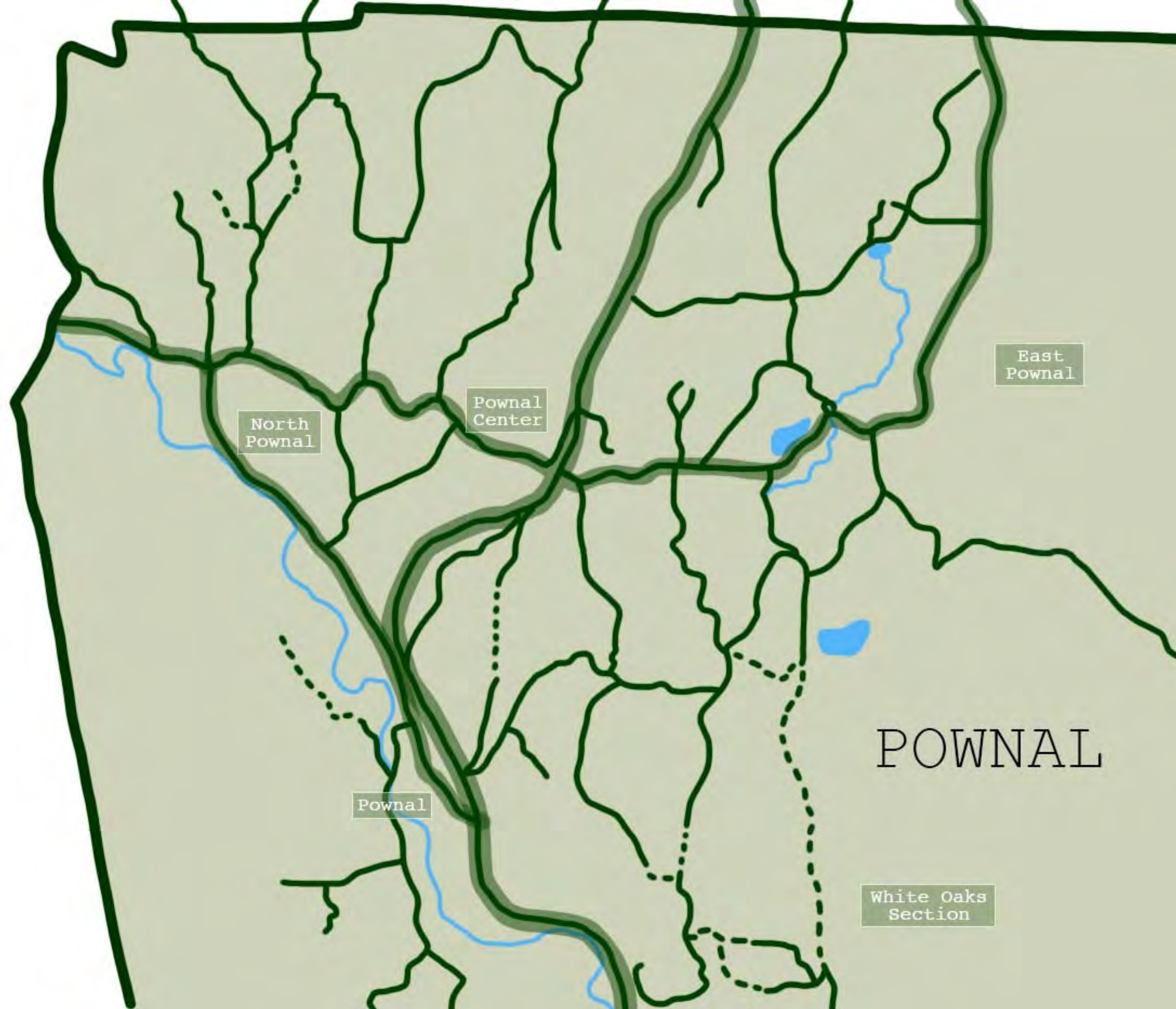
Source: <https://labor.vermont.gov/press-release/vt-unemployment-jobs-report-august-2021>; <https://vtdigger.org/2019/08/05/study-vermont-is-no-2-nationwide-for-second-home-ownership/>

POWNAL









Demographic Information

Population: 3,527 (2010)

Race: 95.7% White (2010)

Median age: 45.6 years old (2019)

- **Population over 50:** nearly 40%

Median household income: \$57, 267 (2010)

Poverty rate: 9.4% (2010)

- **Child poverty rate:** 24.0%
- **65+ poverty rate:** 21.5%
- **Low-income elementary students:** 96.33%

Number of housing units: 1,614 (2010)

Sources: 2019 Town Plan (US Census (1980, 1990, 2000, and 2010), Vermont Housing Finance Agency, and American FactFinder), Vermont Agency of Education Child Nutrition Programs, Bennington Regional Planning Commission



Town Plan (2019)

ECONOMIC DEVELOPMENT GOALS, OBJECTIVES, & ACTIONS



Carl Villanueva

Statewide Goal

"To provide a strong and diverse economy that provides satisfying and rewarding job opportunities and that maintains high environmental standards, and to expand economic opportunities in areas with high unemployment or low per capita incomes."



Pownal Economic Development Goal

“Enhance Pownal’s appeal as a seasonal and tourist destination as well as a profitable destination for businesses to locate and for prospective residents to live.”

Objective: “Increase the region’s visibility and its visitor tourism economic activities through partnerships with allied groups in the region and through local activities and initiatives that highlight Pownal’s unique traits.”

Action Item: “Create informational materials for the town’s website describing and mapping Pownal’s historic, environmental, scenic, recreational, and cultural assets.”

Action Item: “Work with the Pownal Historical Society to promote Pownal as a heritage tourism destination...”



Website: pownal.org



Pownal — *"Where Vermont begins..."*

"The purpose of this website is to share Pownal's rich history, beautiful landscape, and present day assets, as well as the stories of its residents. We recognize that it is incomplete and look forward to adding more information. Please do not hesitate to reach out with any questions, comments, or suggestions via the *Contact Us* page. Thank you for your help."

Layout of Website

1. About Us
2. History
 - a. Churches
 - i. Faith Church, NPCC, PCCC, PUMC, Our Lady of Lourdes RC
 - b. Cemeteries
 - c. Schools
 - d. People
 - e. Places
 - f. Maps
3. Explore
 - a. Recreation
 - i. Mountain Meadow Preserve, Center Street Skatepark, Hoosic Bend Trail, Barber Pond
 - b. Businesses
 - i. Past
 1. Sheep Raising, The Mills, North Pownal Tannery, Green Mountain Racetrack
 - ii. Current Local Businesses
 1. Gammelgården Creamery, Hill Top Farm, Wildstone Farm, Winchester's, Jackie Sedlock
4. Driving Tours
 - a. Church Driving Tour
5. Contact Us



History Pages



Maps

[View](#)



Churches

[Learn More](#)



Cemeteries

[Learn More](#)



Schools

[Learn More](#)



People

[Learn More](#)



Places

[Click Here](#)

Churches



Pownal's Churches



Faith Church

Located in Pownal, the original Baptist church was built in the 1840s and the current structure dates to 1911. Faith Church works to strengthen community in Pownal, offering a revitalized space to congregate and socialize.

[Learn More](#)



Pownal Center Community Church

First organized by the Baptists in 1794, the edifice once known as Union Church was built in the middle of the town green in 1849. Today, Pownal Center Community Church stands in the Pownal Center Historic District. It is open to all every Sunday at 10am.

[Learn More](#)



North Pownal Congregational Church

With a strong historical connection to Williams College, North Pownal Congregational Church was dedicated in 1851 by then Williams College President Mark Hopkins. From its founding, this church is the only Protestant church in Pownal and its broad, undenominational character remains.

[Learn More](#)



Pownal United Methodist Church

Dedicated in 1844 with a membership of 115, The Pownal Methodist Church is the oldest church in Pownal. It is a part of the New England Conference of the United Methodist Church, in the Green Mountain District.

[Learn More](#)



Our Lady of Lourdes Roman Catholic Church

In the Spring of 1898, Pownal's Catholic Church, Our Lady of Lourdes, opened its doors for the first time. A few years prior, Albert C. Houghton of North Adams sold the parcel of land to the Diocese in Burlington for just one dollar. Attendance plummeted in the 1990s due to a scheduling change; the building was sold in 2017 and is no longer functioning as a church, but remains a Pownal landmark.

[Learn More](#)

Cemeteries

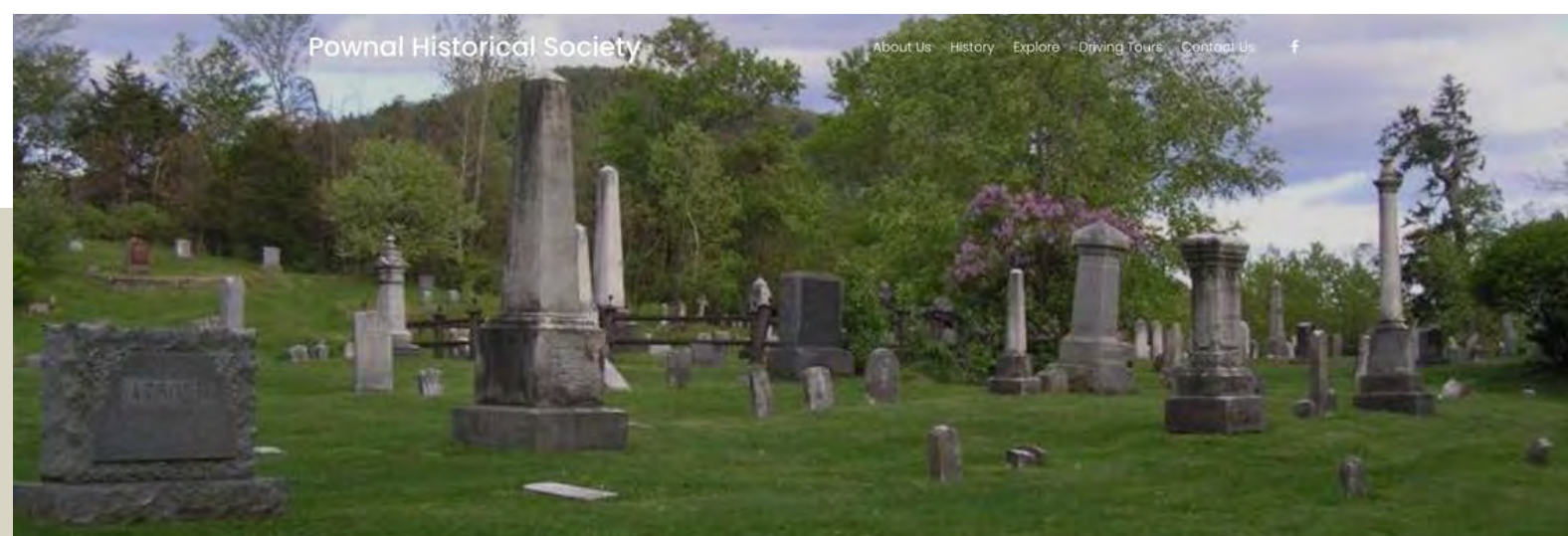
Pownal's Cemeteries



Pownal Historical Society

About Us History Explore Driving Tours Contact Us f

Carpenter Lot - Carpenter Hill Road



Pownal Historical Society

About Us History Explore Driving Tours Contact Us f

North Pownal Cemetery

[Bushnell and Barney Lot](#)

[Carpenter Lot](#)

[Dunn-Ell Card Lot](#)

[Edgar Rathbun Farm](#)

[Eldred Lot \(Fowler Farm\)](#)

[Emma Paddock Farm](#)

[Eros Hicks Farm](#)

[Gardner Historical](#)

[Joseph Barber Farm](#)

[Lovett Yard](#)

[Mason Hill Lot](#)

[Morgan-Towslee Memorial Cemetery](#)

[North Pownal Cemetery](#)

[Oak Hill Cemetery](#)

[P.H. Thompson Farm](#)

[Potter - E. Wilcox Farm](#)

[Potter Lot \(Wm. Arnold Farm\)](#)

[Pownal Center Cemetery](#)

[Reuben Jepson Farm](#)

[Sherman Yard \(Pownal Station\)](#)

[White Oaks](#)

[Woodlawn \(J. Wilcox Farm\)](#)

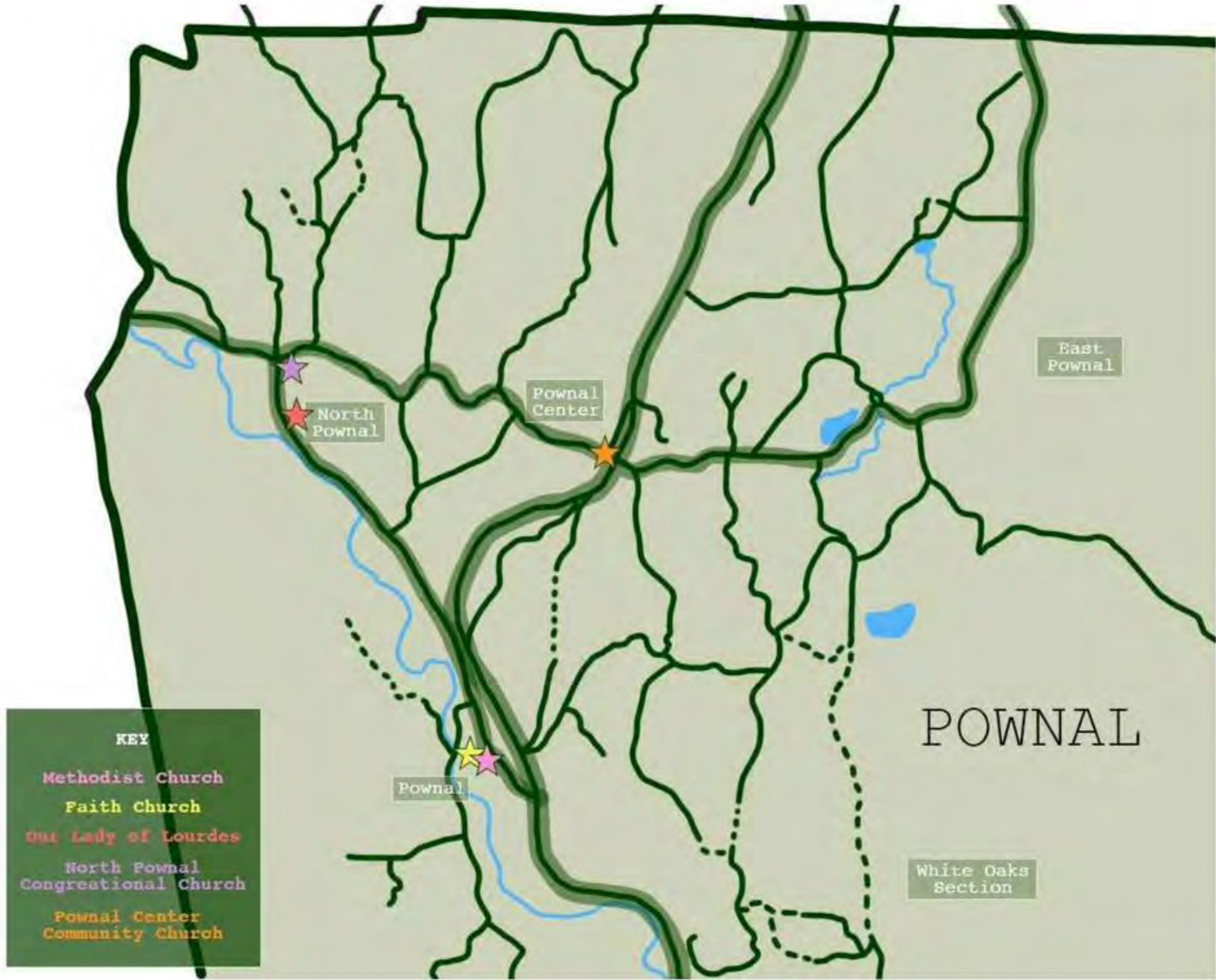
Churches Driving Tour

1. Start your tour at Faith Church (formerly Pownal Baptist Church), at 82 Main Street in the Village of Pownal (across from the Solomon Wright Public Library).
2. Turn around, re-cross the railroad tracks. Pownal United Methodist Church, 284 Church St. in the Village of Pownal, sits on the southeast corner of the intersection of Main St, Church St. and Rte 346.
3. Turn left onto Rte 346North and drive 2.8 miles to the Village of North Pownal. Our Lady of Lourdes RC Church (now a private home) is on the right, at 3310 RT 346.
4. Continue .2 miles on Rte 346N to North Pownal Congregational Church, on the right at #3554.
5. Continue north for .1 mile and turn right onto North Pownal Road. Follow North Pownal Road for 2.9 miles to Center Street. Turn right onto Center St; the Pownal Center Community Church (formerly known as the Union Church) will be on your left past the cemetery. This section of Center St. is the State Historic District of the Village of Pownal Center.
6. To return to your starting point, turn around and go back to the intersection of Center Street and North Pownal Rd. Turn right, and right again onto Rte 7S. Continue down the mountain and turn right onto RT 346N and follow it down to the intersection of Main Street, continuing straight across the intersection onto Main Street, to Faith Church/Solomon Wright Public Library.

Hope you enjoyed your driving tour!


1. Churches

Visit the five standing churches in Pownal: Faith Church, Pownal United Methodist Church, Our Lady of Lourdes RC Church (now a private home), North Pownal Congregational Church, and Pownal Center Community Church



Explore

Pownal Historical Society

[About Us](#) [History](#) [Explore](#) [Driving Tours](#) [Contact Us](#) 



Recreation

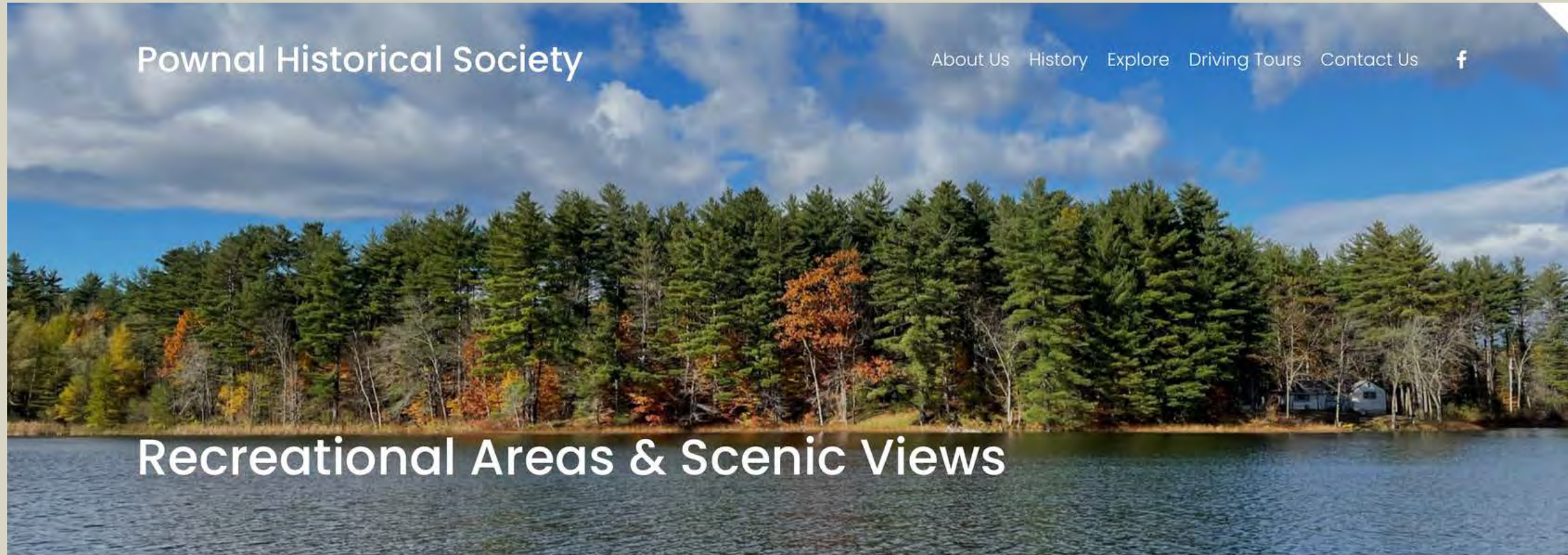
[Explore](#)



Businesses

[Explore](#)

Recreation



Pownal Historical Society

About Us History Explore Driving Tours Contact Us 

Recreational Areas & Scenic Views



Mountain Meadow Preserve

Take a leisurely walk through the 180 acres of this beautiful nature preserve.

[Visit](#)



Center Street Skatepark

Come skate in the open space park in Pownal Center.

[Visit](#)



Hoosic Bend Trail

Take a stroll alongside the Hoosic River and catch a glimpse of its beauty.

[Visit](#)



Barber Pond

Sit by the water and enjoy various water activities at Barber Pond.

[Visit](#)

BUSINESSES

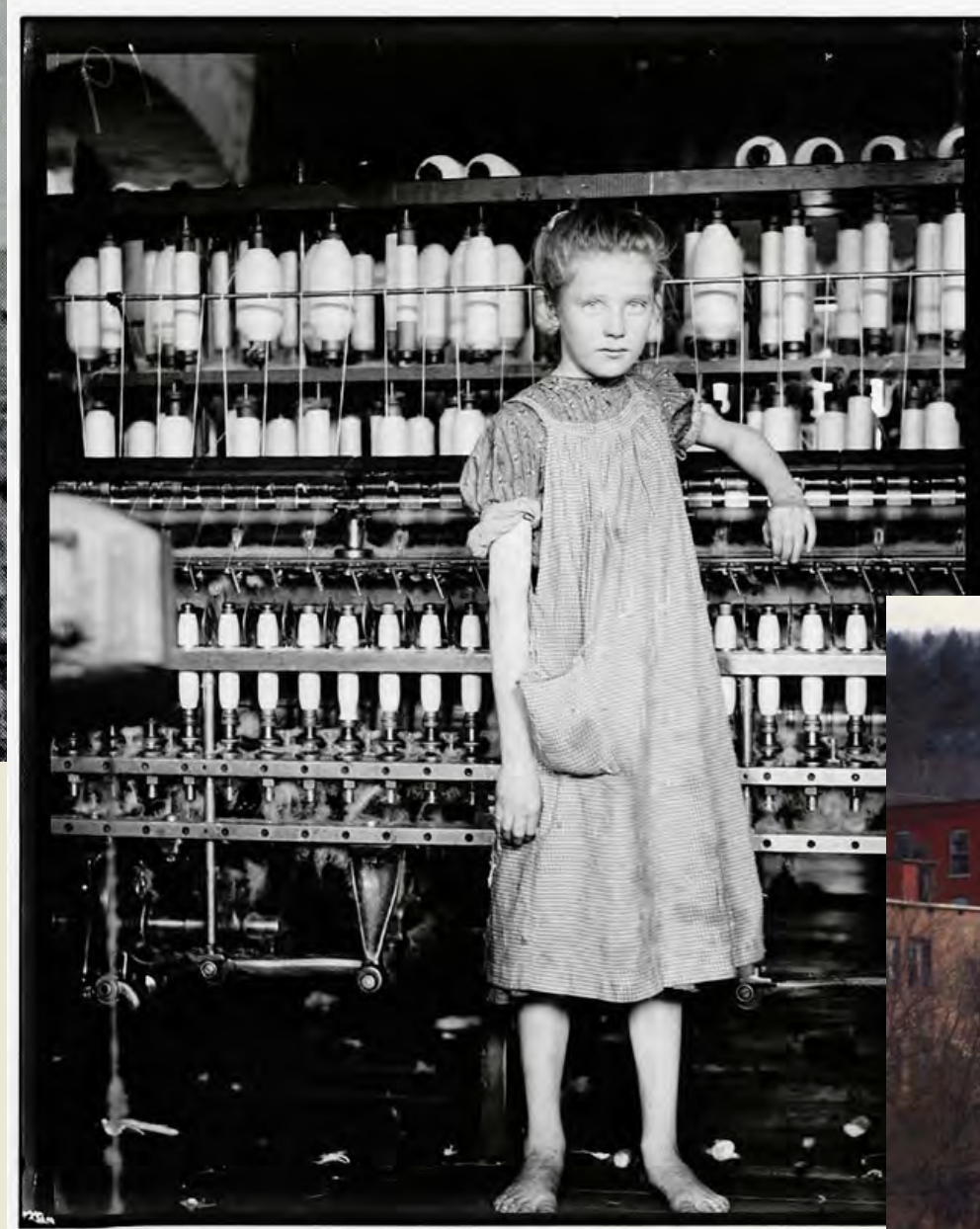


Past



Courtesy of Rachel Mason

Farms



Lewis Hine, 1910

Mills



Green Mountain Racetrack



North Pownal Tannery

Diane Murphy, North Pownal Tannery



INTERVIEWS

with current small business owners

Marilyn and Crystal Gardner, **Hill Top Farm**



John and Joy Primmer, **Wildstone Farm**



Stina Kutzer, Gammelgården Creamery



Jackie Sedlock Pottery



Jim Winchester, Winchester's Store & Deli



CONCLUSION

- History and present day assets, simultaneously
- Centralized platform
- Value of collaboration and diverse perspectives
- Building the website, building community
- Model for others



FUTURE RECOMMENDATIONS



- Add to the website:
 - businesses, recreation, history pages, driving tours
 - with input from residents
- Mohicans page
- Podcasts
- Ecotourism
- Internship/job position
- Promote this resource

Thank you to our wonderful clients,
Wendy Hopkins and Joyce Held,
Professor Sarah Gardner,
and each of our interviewees:

Pastor Jayson Dominey, Pastor Michael Carrel, Ted Church, Linda Hall, Dale Maturski, Mary Louise Mason, Jim Winchester, Diane and Lawrence Murphy, Marilyn and Crystal Gardner, Stina Kutzer, John and Joy Primmer, Jackie Sedlock, Bill Botzow, Natasha Baranow, Angie Rawling, and Lauren Stevens.

Finally, thank you to Carl Villaneuva for the photographs.



Questions?